

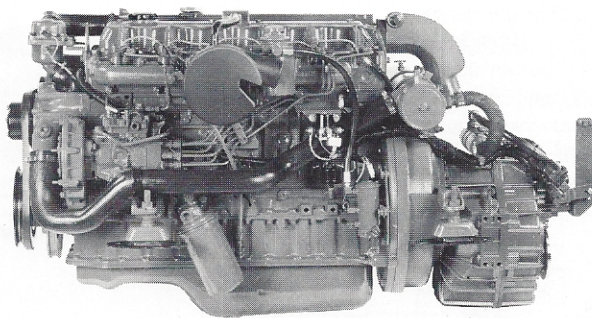
Six cylinder, four cycle smoothness in a lightweight, compact engine

Many features are standard equipment

The new Model 108B Six represents the latest engine design from Westerbeke. With a low and narrow profile it is lightweight and easily installed. The naturally aspirated design provides extra low-end power as well as simplicity and reliability. The standard transmission, fresh water cooling system and captive fail-safe mounts are all oversized for added dependability.

Engineered with a self bleeding fuel system, front mounted sea water pump, oil drain hose and one-side servicing, the product is easily maintained. A comprehensive list of factory designed and installed options allows you to custom tailor your engine to fit your individual requirements.

Parts and service are available worldwide. Westerbeke engines and generators can be serviced by over 600 authorized dealers strategically located in major navigable waterways in the United States and Canada, as well as in 22 countries overseas.

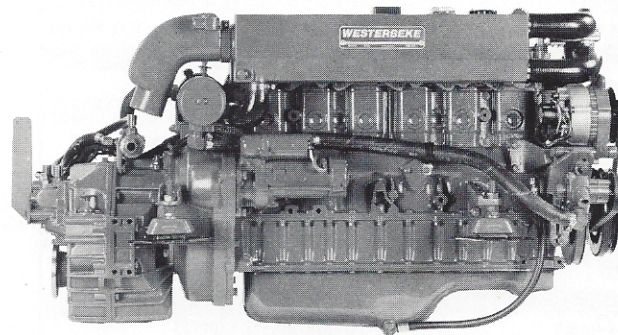


108B Six
Diesel Engine

Dimensions

Length	53.3" (1353.8 mm)
Width	26.9" (682.6 mm)
Height	29.3" (742.9 mm)
Weight	932 lbs (422.8 kilos)

See other side for more dimension information



108B Six
Diesel Engine

A new generation of marine diesel engines

- Fresh water cooling
- Engine prewired to plug-in connector
- Self-bleeding fuel system
- 12 volt, 51 ampere alternator
- Domestic hot water connection
- Coolant recovery tank
- Throttle and shift control brackets
- Low oil pressure and high water temperature alarms
- Belt-driven sea water pump
- Oversized marine transmission with 2.0:1 reduction
- Transmission oil cooler
- Glow plug cold starting aid
- Oversized four point adjustable flex mount
- Lube oil drain hose
- Fresh water lube oil cooler
- Flexible fuel supply and return connector
- Operator's Manual and Parts List
- Large list of factory engineered options

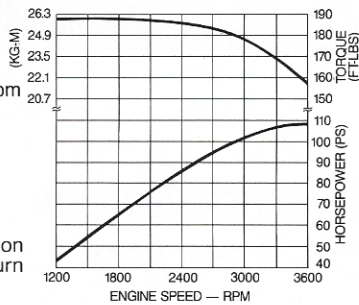
Performance Data

Horsepower and rpm
108 hp @ 3600 rpm

Maximum torque and rpm
188 lbs (26 kg)/ft @ 2000 rpm

Typical fuel consumption is:
2.1 US/GPH (7.9 liters/hr)
at 2500 rpm with
recommended propeller

Propeller recommendation:
When underway and at full
throttle, the propeller selection
should allow the engine to turn
3500 rpm minimum.



Specifications

Number of cylinders	6 Cylinder vertical in-line
Cycles	4 Cycle
Displacement	247.2 cu. in. (4.05 liter)
Bore and stroke	3.62" x 4.00" (91.9mm x 101.6mm)
Compression ratio	21:1
Maximum angle of installation	Not to exceed 14°
Maximum angle of operation	Not to exceed 25°
Crankshaft, direction of rotation	Counterclockwise as viewed from flywheel end
Propeller shaft, direction of rotation	Right hand — std. trans.
Dry weight	932 lbs (422.8 kilos)
Combustion system	Swirl type
Aspiration	Naturally aspirated
Lubrication system	Forced lubrication by gear pump
Cooling system	16 quarts (15.1 liters)
Starting aid	12 volt sheathed type glow plug
Engine stop	Electric
Fuel injection pump	Bosch type
Governor	Centrifugal type
Injectors	Throttle type
Fuel filter	Full flow, spin-on element
Lube oil filter	Full flow, spin-on element
Lubricant capacity	12 quarts (11.3 liters)
Lube oil cooler	Fresh water cooled
Fuel transfer pump	Electrical
Fuel supply and return piping	1/4" ID (.635 mm) minimum 3/8" ID (.952 mm) maximum
Starting motor	12 volt, solenoid, actuated shift
Battery charging alternator	51 ampere (12 volts)
Cold cranking amps	250-300 amps
Electrical system	12 volts DC, negative ground

Construction — Engine Components

Cylinder head	Cast iron
Cylinder block	Cast iron
Crankshaft	Forged crankshaft, seven main bearings
Valves	Overhead valves, rotating type
Fuel system	Self bleeding
Intake system	Tuned intake silencer for maximum noise reduction
Cooling system	Fresh water-cooled with oversized tube and shell type heat exchanger
Exhaust manifold	Cast aluminum, fresh water-cooled with built-in expansion tank

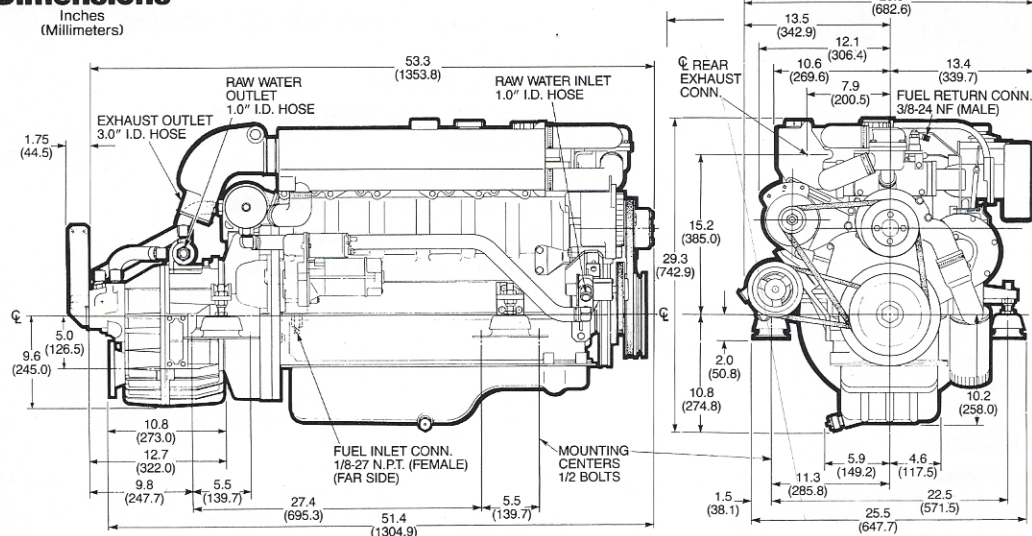
Standard Equipment

Standard gear ratio	2.0:1
Mounting centers	22.5"
Flexible mounts	Oversized adjustable fail safe rubber type
Domestic hot water connection	
Coolant recovery tank	
Battery charging alternator	51 amp, 12 volt
Starting aid	
Control brackets	Throttle and shift
Prewired Engine	
Belt-driven sea water pump	
Lube oil cooler in fresh water system	
Lube oil drain hose	
Transmission oil cooler	
Oil fill	Top
Flexible fuel supply and return connection	
Operator's Manual and Parts List	

Optional Equipment

Captain panel with alarm (tachometer with lights)	
Admiral panel with alarms (tachometer with gauges)	
Dual station senders	
Other gear ratios	Consult local Distributor
Hydraulic transmissions	Consult local Distributor
Remote expansion tank	
Provisions for refrigeration compressor	
Muffler and fittings	
"A" and "B" on board spare parts kits	
Alternators, 90 amp single output; 135, 165, 190 dual output	
Anti-siphon valve for overboard cooling discharge water	
Technical Manual	
Exhaust connection (water injected 70° elbow)	
Propeller shaft couplings (rigid/flexible) — available standard sizes	

Dimensions



Authorized Dealer